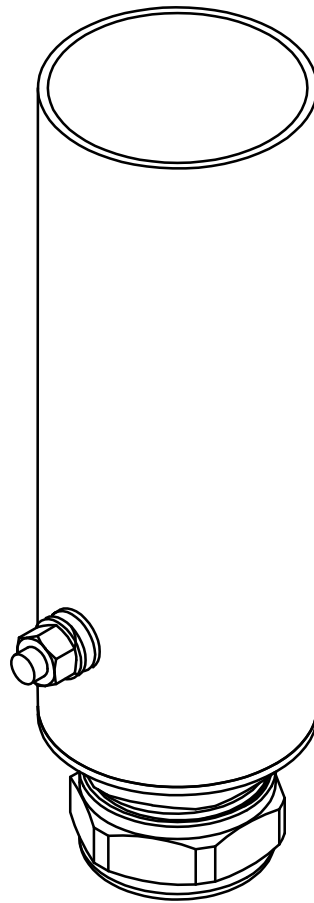


ARPOOL XS

INSTALLATION INSTRUCTIONS (HOUSING)



3m MAX.
UNDERWATER

IP68

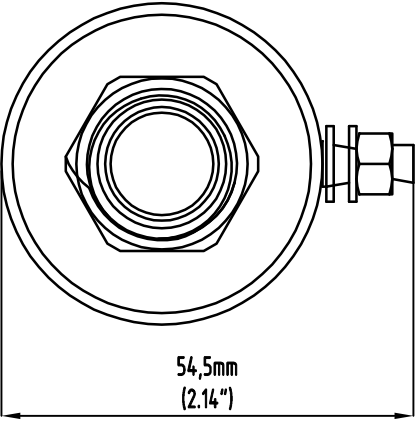
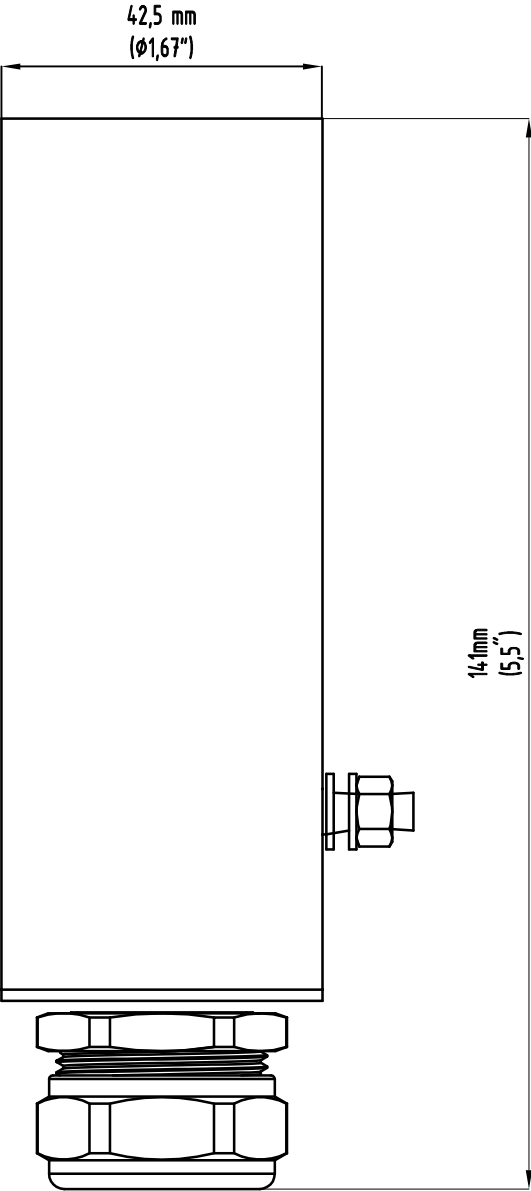
AISI316L



ALL DIMENSIONS ARE GIVEN ACCORDING TO THE SI SYSTEM OF UNITS (MM, KG, °C), ADDITIONAL DIMENSIONS THAT ARE WRITTEN IN BRACKETS, ARE GIVEN ACCORDING TO THE U.S. MEASUREMENT SYSTEM (IN, LBS, °F)

GENERAL REMARKS ON SAFETY

- READ ALL OF THESE INSTRUCTIONS BEFORE INSTALLATION.
- KEEP ALL OF THE INSTRUCTIONS FOR FUTURE REFERENCE.
- INSTALLATION IS TO BE PERFORMED BY A QUALIFIED CONTRACTOR.
- ALL INSTALLATIONS ARE TO CONFORM TO THE STANDARDS OF THE NATIONAL ELECTRICAL CODE AS WELL AS ALL LOCAL JURISDICTIONAL CODES AND REGULATIONS.
- THE MANUFACTURER ACCEPTS NO RESPONSIBILITY FOR DAMAGE TO PERSONS OR PROPERTY ARISING THROUGH IMPROPER USE OR INSTALLATION.
- HOUSINGS' SURFACES EXPOSED TO THE EFFECTS OF WATER (INCLUDING WATER CONTAINING CHLORINE) ARE MADE OUT OF AISI316L STAINLESS STEEL. AISI316L IS SUITABLE FOR THIS USE AND WILL PREVENT CORROSION UP TO LEVEL OF 1000 PPM OF CHLORINE IN WATER AND UP TO WATER pH LEVEL OF 7.
- FOR WARRANTY CONDITIONS PLEASE CONSULT LOCAL SALES REPRESENTATIVE

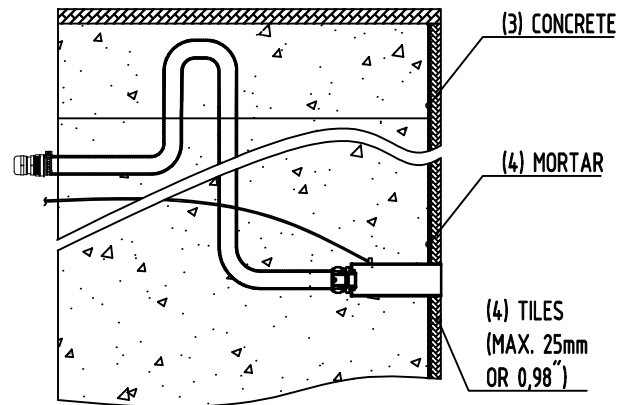
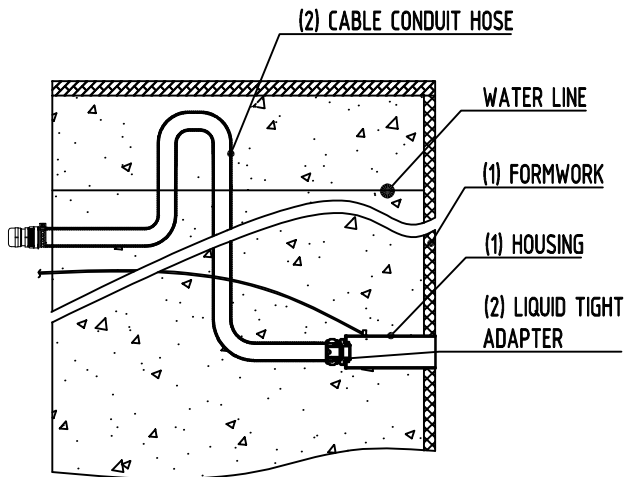


HOUSING INSTALLATION GUIDE

1. ATTACH THE ARPOOL INSTALLATION HOUSING TO THE FORMWORK
2. ATTACH CABLE CONDUIT HOSE TO HOUSING USING LIQUID TIGHT ADAPTER, ENSURE IT IS TIGHTENED SECURELY. (CABLE CONDUIT HOSE SUPPLIED BY MANUFACTURER).
3. POUR CONCRETE
4. PUT MORTAR AND TILES

IMPORTANT NOTE:

- BEFORE ATTACHING THE HOUSING (1), PROTECT THE HOUSING OPENING WITH TAPE, TO PREVENT EXCESS MATERIAL IN THE HOUSING
- THE MINIMUM BENDING RADIUS FOR THE CABLE CONDUIT HOSE IS 70 MM. DO NOT GO BELOW THIS LIMIT.



CABLE INSTALLATION GUIDE

IMPORTANT NOTE:

WHEN ROUTING THE CABLE CONDUIT HOSE, POSITION THE SECTION OF THE HOSE ABOVE THE WATERLINE TO PREVENT WATER DRAINAGE FROM THE POOL THROUGH THE HOSE

